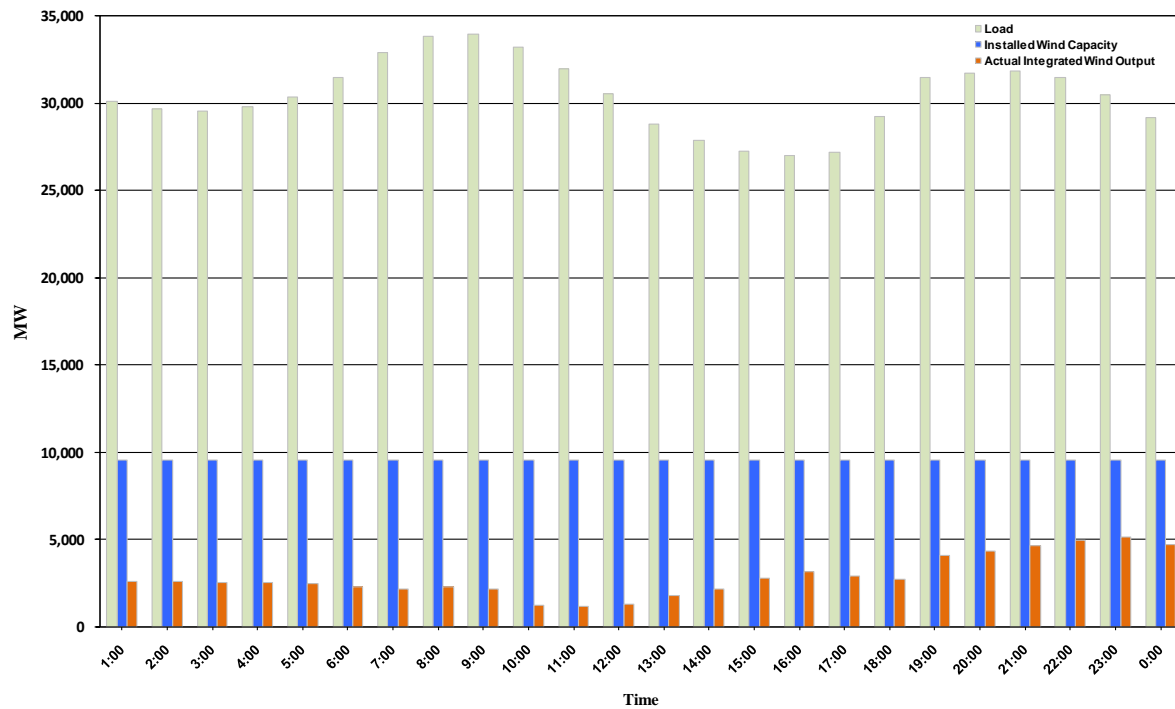




ERCOT Grid Operations Wind Integration Report: 11/27/10

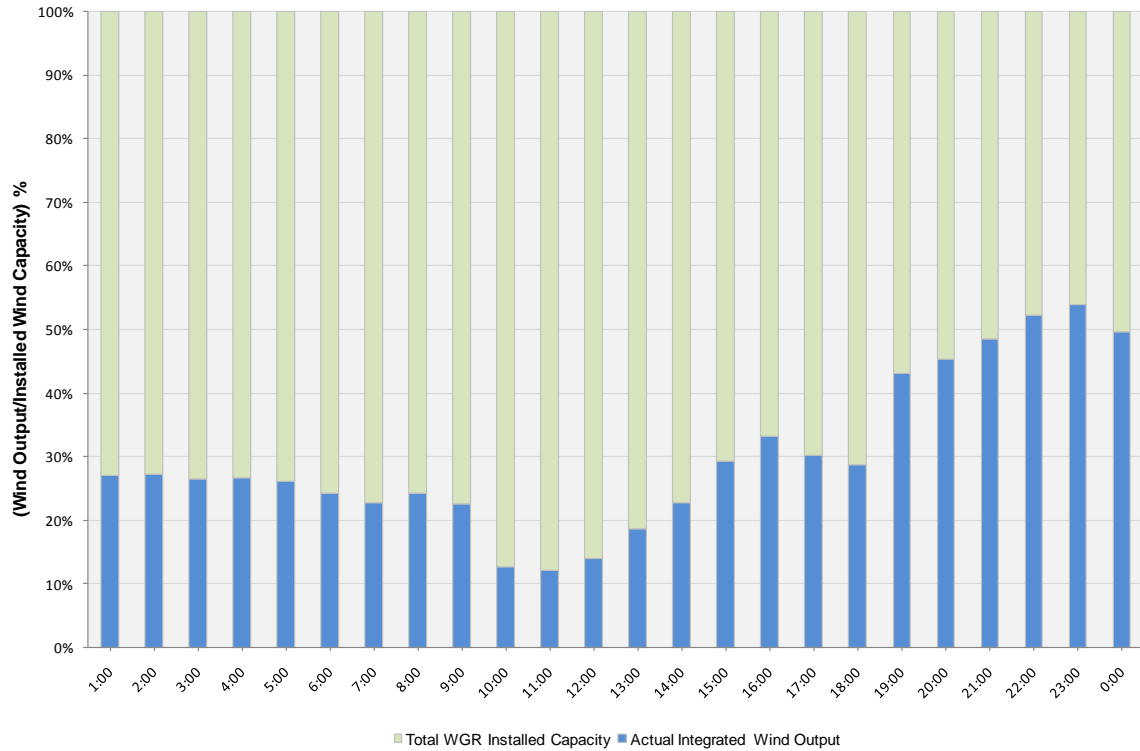
Peak Load	33,955 MW
Load Peak Hour	09
Wind Record 06/12/10	7016 MW
Max Wind value	5274 MW
Wind Peak Hour	22:29:08
Wind Integration %	17.28

Hourly Average Actual Load vs. Actual Wind Output
11-27-2010

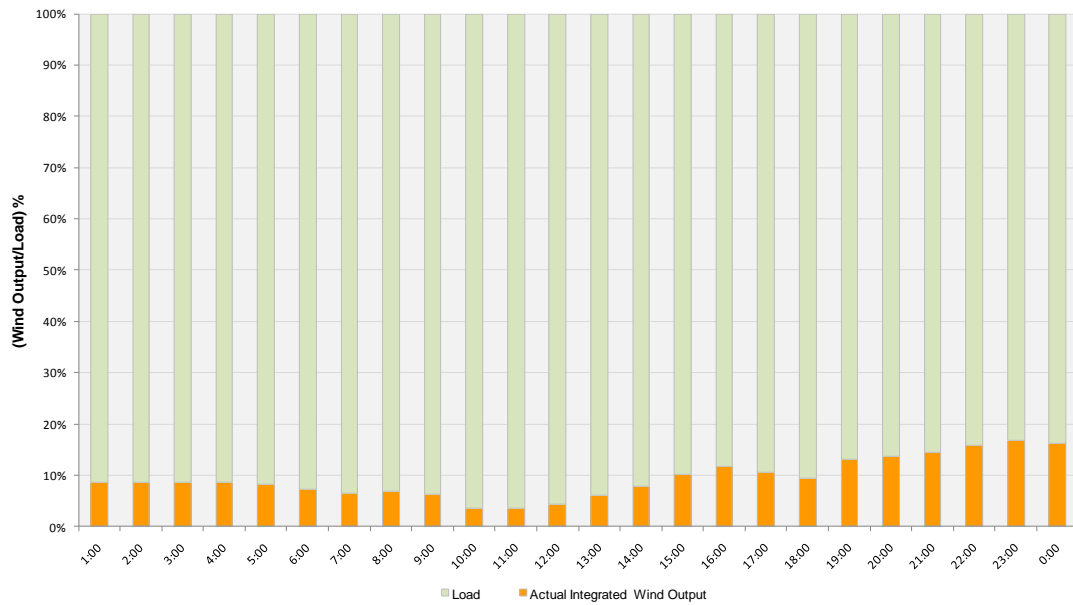




Actual Wind Output as a Percentage of the Total Installed Wind Capacity
11-27-2010



Actual Wind Output as a Percentage of the ERCOT Load
11-27-2010





ERCOT Load vs. Actual Wind Output 11/20/10 - 11/27/10

